


Human IGF-1 Protein

Cat #: PRP1065

Size: 100µg/500µg/1mg/10mg

Product Information

	Product Name: Human IGF-1 Protein		
REF	Catalog Number: PRP1065	LOT	Lot Number: Refer to product label
	Purity: > 95% as determined by SDS-PAGE		
	Storage: Store at -20°C		Preparation method: E.coli
	Shipping: The product is shipped at ambient temperature.		

Background: IGF I was also known as Mechano Growth Factor, somatomedin-C, IGF-I, and IGF1, is a secreted protein that belongs to the insulin family. The insulin family, comprised of insulin, relaxin, insulin-like growth factors I and II (IGF-I and IGF-II), and possibly the beta-subunit of 7S nerve growth factor, represents a group of structurally related polypeptides whose biological functions have diverged. The IGFs, or somatomedins, constitute a class of polypeptides that have a key role in pre-adolescent mammalian growth. IGF-1 expression is regulated by GH and mediates postnatal growth, while IGF-II appears to be induced by placental lactogen during prenatal development. IGF1 / IGF-1 may be a physiological regulator of [1-14C]-2-deoxy-D-glucose (2DG) transport and glycogen synthesis in osteoblasts.

Sequence: Amino acid sequence derived from Human IGF-1 (Gly49-Ala118) (P05019) was expressed with 6×His tag at the C-terminus.

Protein length: The recombinant Human IGF-1 consists of 71 amino acids and predicts a molecular mass of 7.8 kDa.

Biological Activity: Measure by its ability to induce MCF-7 cells proliferation. The ED₅₀ for this effect is 0.9-3.1 ng/mL.

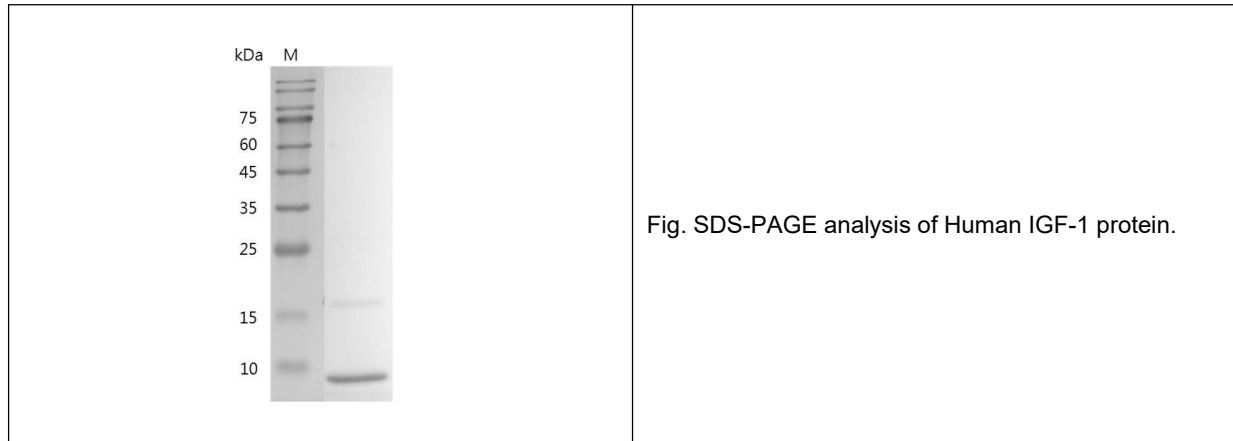
Endotoxin: < 0.01 EU per µg of the protein as determined by the LAL method.

Formulation: Lyophilized from sterile PBS, pH 7.4.

Storage Instructions: Lyophilized protein product should be stored desiccated below -18°C. Upon reconstitution, the protein should be stored at 4°C between 2-7 days and for future use below -18°C. For long term storage it is recommended to add a carrier protein (5% HSA , 10%FBS or 0.1%BSA). Please prevent freeze-thaw cycles.

Usage notes: Always centrifuge tubes before opening. It is recommended to reconstitute the lyophilized recombinant Human

IGF-1 protein to a concentration of 0.1-1 mg/mL in sterile ddH₂O, and keep at room temperature for at least 20 min to fully dissolve. Please avoid vortex vigorously.



Note: The product listed herein is for research use only and is not intended for use in human or clinical diagnosis. Suggested applications of our products are not recommendations to use our products in violation of any patent or as a license. We cannot be responsible for patent infringements or other violations that may occur with the use of this product.