


## Human IL-15 protein

Cat #: PRP1063

Size: 5µg/20µg/100µg/1mg

### Product Information

	<b>Product Name:</b> Human IL-15 protein		
<b>REF</b>	<b>Catalog Number:</b> PRP1063	<b>LOT</b>	<b>Lot Number:</b> Refer to product label
	<b>Purity:</b> >95% as determined by SDS-PAGE		
	<b>Storage:</b> Store at -20°C		<b>Preparation method:</b> E. coli
	<b>Shipping:</b> The product is shipped at ambient temperature.		

**Background:** The protein encoded by IL-15 is a cytokine that regulates T and natural killer cell activation and proliferation. This cytokine and interleukine 2 share many biological activities. They are found to bind common hematopoietin receptor subunits, and may compete for the same receptor, and thus negatively regulate each other's activity. The number of CD8+ memory cells is shown to be controlled by a balance between this cytokine and IL-2. This cytokine induces the activation of JAK kinases, as well as the phosphorylation and activation of transcription activators STAT3, STAT5, and STAT6. Studies of the mouse counterpart suggested that this cytokine may increase the expression of apoptosis inhibitor BCL2L1/BCL-x(L), possibly through the transcription activation activity of STAT6, and thus prevent apoptosis. Two alternatively spliced transcript variants of this gene encoding the same protein have been reported.

**Sequence:** Amino acid sequence derived from Human IL-15 (Asn49-Ser162) (P40933) was expressed with 6×His tag at the N-terminus.

**Protein length:** The Human IL-15 consists of 114 amino acids and has a predicted molecular mass of 12.7 kDa.

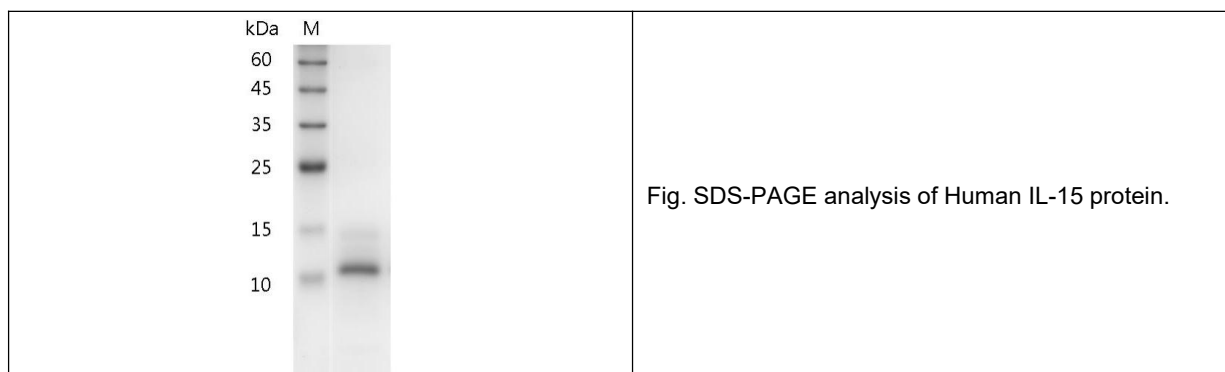
**Biological Activity:** Measure by its ability to induce proliferation in CTLL-2 cells. The ED<sub>50</sub> for this effect is <3 ng/mL.

**Endotoxin:** <0.01 EU per µg of the protein as determined by the LAL method.

**Formulation:** Lyophilized from sterile PBS, pH 8.0.

**Storage Instructions:** Lyophilized protein product should be stored desiccated below -18°C. Upon reconstitution, the protein should be stored at 4°C between 2-7 days and for future use below -18°C. For long term storage it is recommended to add a carrier protein (5% HSA, 10%FBS or 0.1%BSA). Please prevent freeze-thaw cycles.

**Usage notes:** Always centrifuge tubes before opening. It is recommended to reconstitute the lyophilized recombinant Human IL-15 protein to a concentration of 0.1-1 mg/mL in sterile ddH<sub>2</sub>O, and keep at room temperature for at least 20 min to fully dissolve. Please avoid vortex vigorously.



**Note:** The product listed herein is for research use only and is not intended for use in human or clinical diagnosis. Suggested applications of our products are not recommendations to use our products in violation of any patent or as a license. We cannot be responsible for patent infringements or other violations that may occur with the use of this product.