



## Colorcode Prestained Protein Marker (15-130 kDa)

Cat #: BMM3002

Size: 100ul/250ulx2/250ulx20

### Product Information

	<b>Product Name:</b> Colorcode Prestained Protein Marker (15-130 kDa)		
	<b>Solution:</b> Dye-stained proteins in buffers		<b>Formulation:</b> Liquid solution
<b>REF</b>	<b>Catalog Number:</b> BMM3002	<b>LOT</b>	<b>Lot Number:</b> Refer to product label
	<b>Storage:</b> Store at -20°C.		<b>Note:</b> Optimized for SDS-PAGE and Western blotting.

**Background:** Protein marker is designed for monitoring the progress of SDS-polyacrylamide gel electrophoresis, for assessing transfer efficiency onto PVDF, nylon and nitrocellulose membranes, and for estimating the approximate size of separated proteins that have been made visible with gel stains or Western blot detection reagents.

**Product Description:** The Colorcode Prestained Protein Marker is a mixture of eight (8) blue, orange stained proteins (15, 20, 25, 35, 50, 70, 100, 130kDa) for use as size standards in protein electrophoresis (SDS-PAGE) and Western blotting. The Marker contains one orange reference band at 70kDa and the weak band between 35kDa and 50kDa is 40kDa.

**Storage Buffer:** Dye-stained proteins in 67mM Tris-H<sub>3</sub>PO<sub>4</sub>, pH7.5, 5mM EDTA, 2% (W/V) SDS, 33% (V/V) Glycerol, 0.02% (V/V) proclin300.

**Usage instructions:** Thaw the Marker at room temperature. Mix gently and thoroughly to ensure that the solution is homogeneous. The Marker has been prepared in 1xSDS-PAGE loading buffer. Use directly without boiling, diluting or adding reducing agent.

Suggested volume of the Marker onto the gel: Mini-gel, 2-5µL per well (0.75-1.0mm thick or 1.5mm thick). Large gel, 5-10µL per well (0.75-1.0mm thick or 1.5mm thick).

**Storage instructions:** Stable for at least one year at -20°C or up to six months at 4°C from date of shipment. Aliquot to avoid repeated freezing and thawing.

**Shipping:** Gel pack with blue ice.

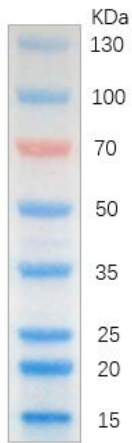


Image is from a 15% Tris-glycine gel (SDS-PAGE) transferred to membrane using Abbkine Colorcode Prestained Protein Marker (15-130 kDa). Loading volume: 5ul.

**Note:** The product listed herein is for research use only and is not intended for use in human or clinical diagnosis. Suggested applications of our products are not recommendations to use our products in violation of any patent or as a license. We cannot be responsible for patent infringements or other violations that may occur with the use of this product.